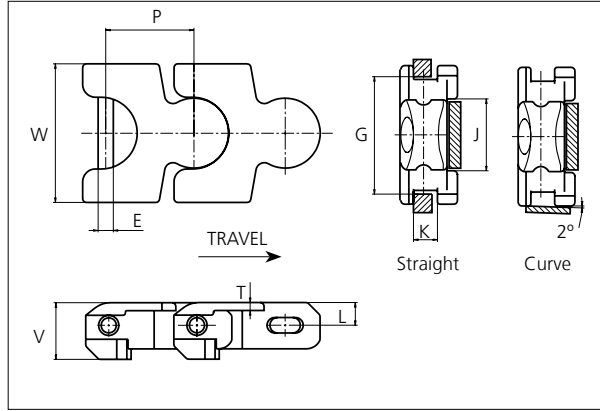


uni Flex Plastic Chain

Series **uni 2700** Type -



uni Flex Plastic Chain
 Side flexing chain
 Pitch: 70.0 mm (2.76 in)
 Backflex radius:
 200 mm (8.00 in)
 Permissible tensile strength:
 POM material:
 11000 N (2473 lbf)
 Standard shipping lengths:
 boxes of 72 links
 = 5.040 m (16.5 ft)

STANDARD

E		G		J		K		L		P		T		V	
mm	in	mm	in	mm	in	mm	in	mm	in	mm	in	mm	in	mm	in
12.0	0.47	92.0	3.64	57.0	2.24	19.0	0.75	18.5	0.71	70.0	2.76	6.3	0.25	45.0	1.77

All dimensions are for chains in POM material.

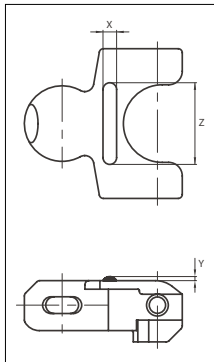
Width (W)		Material & color	Pin material	Weight		Min. radius (R)	
mm	in			kg/m	lb/ft	mm	in
110.0	4.33	POM-D W POM-LF BR	SS304	4.6	3.09	300.0	11.81

Non standard material and color: See uni Material and Color Overview.

Non standard pin material: See uni Material and Color Overview.

Accessories

Rubber Top/NON STANDARD



Link material	Rubber material	Z		X		Y	
		mm	in	mm	in	mm	in
POM-D W	05 I	10.0	0.39	60.0	2.36	3.0	0.12

When ordering, please state the required distance between the Rubber Top.

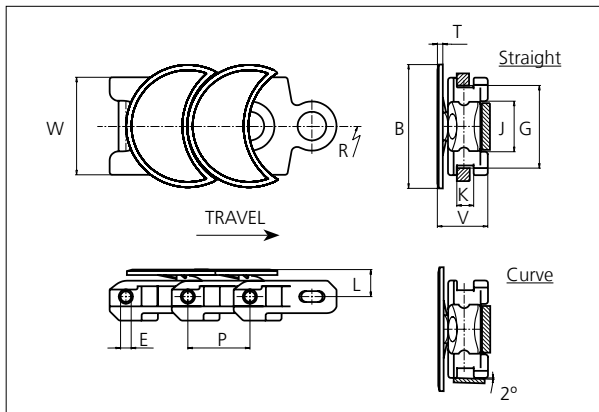
Other Non Standard rubber profiles:
 See uni Rubber Profile Overview

SIDE FLEXING

PITCH 70.0 MM/2.76 IN

uni Flex Plastic Chain

Series **uni 2700** Type **H**



uni Flex Plastic Chain

Side flexing chain
 Pitch: 70.0 mm (2.76 in)
 Permissible tensile strength:
 POM material:
 11000 N (2473 lbf)
 Standard shipping lengths:
 boxes of 72 links
 = 5.040 m (16.5 ft)

Note that the 2700 H cannot backflex.

B		E		G		J		K		L		P		T		V	
mm	in	mm	in	mm	in	mm	in	mm	in	mm	in	mm	in	mm	in	mm	in
139.0	5.47	12.0	0.47	92.0	3.62	57.0	2.24	19.0	0.75	29.4	1.16	70.0	2.76	6.1	0.24	56.4	2.22

All dimensions are for chains in POM material.

Width (W)		Recommended base material & color	Recommended plate material & color	Weight		Min. radius (R)	
mm	in			kg/m	lb/ft	mm	in
110.0	4.33	POM-D W POM-D G POM-LF BR	POM-D W POM-D G POM-LF BR	5.6	3.76	600.0	23.62

Non standard base material and color: See uni Material and Color Overview.

Non standard plate material and color: See uni Material and Color Overview.

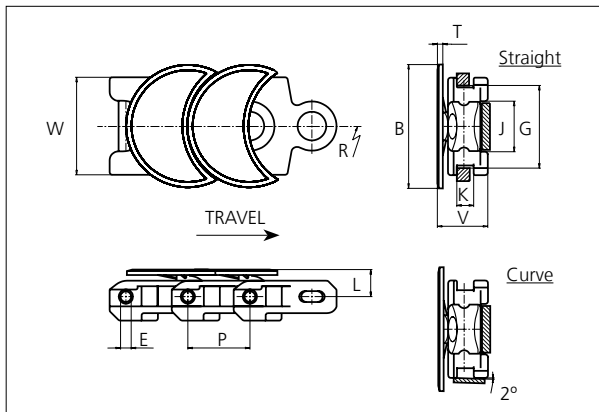
NON STANDARD

SIDE FLEXING

PITCH 70.0 MM/2.76 IN

uni Flex Plastic Chain

Series **uni 2700** Type **H R**



uni Flex Plastic Chain

Side flexing chain
 Pitch: 70.0 mm (2.76 in)
 Permissible tensile strength:
 POM material
 11000 N (2473 lbf)

Standard shipping lengths:
 boxes of 72 links
 = 5.040 m (16.5 ft)

Note that the 2700 H R cannot backflex.

B		E		G		J		K		L		P		T		V	
mm	in	mm	in	mm	in	mm	in	mm	in	mm	in	mm	in	mm	in	mm	in
139.0	5.47	12.0	0.47	92.0	3.62	57.0	2.24	19.0	0.75	29.4	1.16	70.0	2.76	6.1	0.24	56.4	2.22

All dimensions are for chains in POM material.

Width (W)		Recommended base material & color	Recommended plate material & color	Weight		Min. radius (R)	
mm	in			kg/m	lb/ft	mm	in
110.0	4.33	POM-D W POM-D G POM-LF BR	POM-D W POM-D G POM-LF BR	4.33	5.4	250.0	9.84

Non standard base material and color: See uni Material and Color Overview.

Non standard plate material and color: See uni Material and Color Overview.

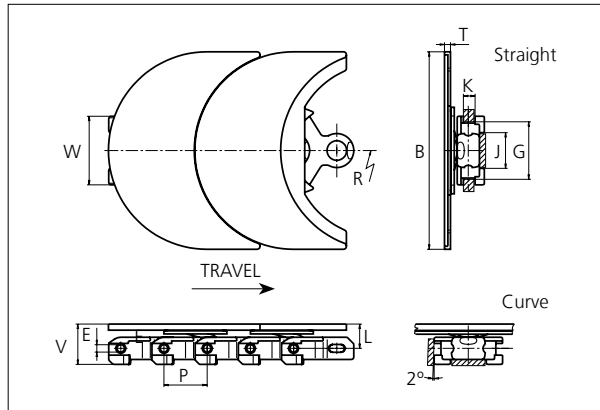
NON STANDARD

SIDE FLEXING

PITCH 70.0 MM/2.76 IN

uni Flex Plastic Chain

Series **uni 2700** Type **LH**



uni Flex Chains

Side flexing chain
Pitch: 70.0 mm (2.76 in)
Permissible tensile strength:
POM material
11000 N (2473 lbf)

Standard shipping lengths:
boxes of 36 links
= 2.520 (8.25 ft)

Note that the 2700 LH cannot backflex.

B		E		G		J		K		L		P		T		V	
mm	in	mm	in	mm	in	mm	in	mm	in	mm	in	mm	in	mm	in	mm	in
320.0	12.60	12.0	0.47	92.0	3.62	57.0	2.24	19.0	0.75	38.9	1.53	70.0	2.76	9.5	0.37	65.9	2.59

All dimensions are for chains in POM material.

Width (W)		Recommended base material & color	Recommended plate material & color	Weight		Min. radius (R)	
mm	in			kg/m	lb/ft	mm	in
110.0	4.33	POM-LF BR	PA6 K	8.7	5.85	600.0	23.62

Non standard material and color: See uni Material and Color Overview.

Non standard pin material: See uni Material and Color Overview.

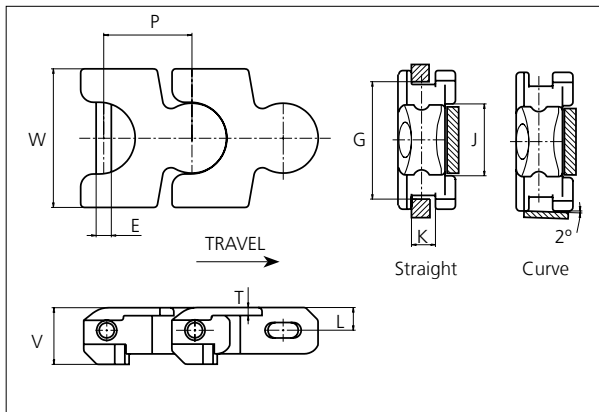
NON STANDARD

SIDE FLEXING

PITCH 70.0 MM/2.76 IN

uni Flex Plastic Chain

Series **uni 2700** Type **R**



uni Flex Plastic Chain
 Side flexing chain
 Pitch: 70.0 mm (2.76 in)
 Backflex radius:
 200 mm (8.00 in)
 Permissible tensile strength:
 POM material
 11000 N (2473 lbf)
 Standard shipping lengths:
 boxes of 72 links
 = 5.040 m (16.5 ft)

E		G		J		K		L		P		T		V	
mm	in	mm	in	mm	in	mm	in	mm	in	mm	in	mm	in	mm	in
12.0	0.47	92.0	3.64	57.0	2.24	19.0	0.75	18.5	0.71	70.0	2.76	6.3	0.25	45.0	1.77

All dimensions are for chains in POM material.

Width (W)		Recommended base material & color	Recommended pin material & color	Weight		Min. radius (R)	
mm	in			kg/m	lb/ft	mm	in
110.0	4.33	POM-D W POM-D G POM-LF BR	SS304	4.4	2.96	250.0	9.84

Non standard material and color: See uni Material and Color Overview.

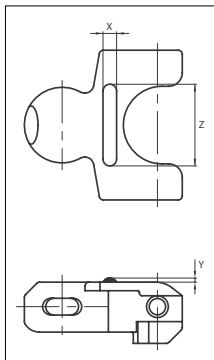
Non standard pin material: See uni Material and Color Overview.

Accessories

Rubber Top



Photo will be updated



When ordering, please state the required distance between the Rubber Top.

Other Non Standard rubber profiles:
 See uni Rubber Profile Overview


Link material	Rubber material	Z		X		Y	
		mm	in	mm	in	mm	in
POM-D W	05 I	10.0	0.39	30.0	1.18	3.0	0.12

NON STANDARD

SIDE FLEXING

PITCH 70.0 MM/2.76 IN

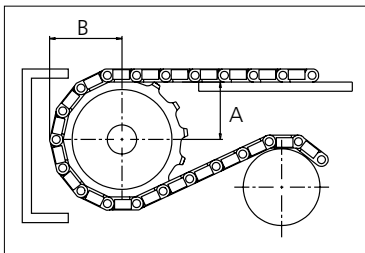
Sprocket

No of teeth	Pitch diameter		Overall-diameter		Min. ø bore		Max. ø bore		Hub-diameter		Dimension A		Dimension B		 Machined PAG
	mm	in	mm	in	mm	in	mm	in	mm	in	mm	in	mm	in	
Z8	182.8	7.20	184.0	7.2	20.00	0.8	50.00	2.0	73.50	2.9	92.80	3.7	116.70	4.6	✓
Z10	226.4	8.91	227.6	9.0	20.00	0.8	50.00	2.0	73.50	2.9	116.00	4.6	137.60	5.4	✓

Machined sprocket



Non standard material and color:
See uni Material and Color Overview.



Please ensure that sufficient size shaft and keyway are chosen for corresponding load.

Other sprocket sizes are available upon request
 Width of tooth: 15.0 mm/0.60 in
 Width of sprocket: 42.3 mm/1.70 in
 uni Retainer Rings: See uni Retainer Ring data sheet