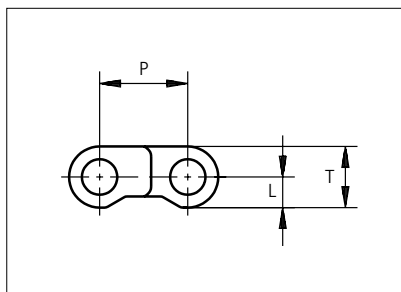
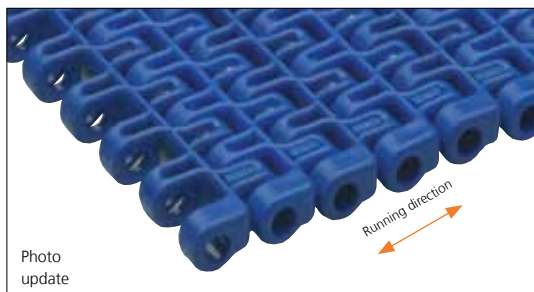


Plastic Modular Belt

Series **uni M-SNB** Type **M2 14%**

Distribué par Faber, service tapis
tapis@faber.fr tel. 03 24 27 86 38 fax 03 24 27 27 01



Straight running belt
Nominal pitch: 12.7 mm (0.50 in)
Surface type: Flat
Surface opening: 14%
Backflex radius: 20.0 mm (0.80 in)
Pin diameter: 5 mm (0.20 in)

Belt material & color	POM-D B	mm	in		mm	in	
		P (Nominal)	12.7	0.50	T	8.8	0.35
Pin material & color	PP B	L	4.4	0.17	-	-	-

Non standard material and color: See uni Material and Color Overview.

Alternative pin and lock materials: G-lock: PA6.6 **N** Pin: PA6.6 **B** PE **W** PBT **LG** SS304 Endlock: PP **B** **W**
Lockpin: PBT **LG** PA6.6 **D** PP **W** PE **N**

Belt width		Permissible tensile force (Belt/pin material)		Belt weight (Belt/pin material)		*Min. No. drive sprocket per shaft	Number of wear strips (Min. No.)	
		POM-D/PP		POM-D/PP			**Carry (pcs)	**Return (pcs)
mm	in	N	lbf	kg/m	lb/ft			
77	3.0	1155	260	0.5	0.33	2	2	2
153	6.0	2295	516	1.0	0.65	2	2	2
229	9.0	3435	772	1.4	0.97	2	2	2
305	12.0	4575	1028	1.9	1.29	3	3	2
381	15.0	5715	1285	2.4	1.61	3	3	2
458	18.0	6870	1544	2.9	1.94	4	4	2
534	21.0	8010	1801	3.4	2.26	4	4	2
610	24.0	9150	2057	3.8	2.58	5	5	3
686	27.0	10290	2313	4.3	2.90	5	5	3
762	30.0	11430	2569	4.8	3.23	6	6	3
839	33.0	12585	2829	5.3	3.55	6	6	3
915	36.0	13725	3085	5.8	3.87	7	7	4

Additional standard belt widths are available in steps of 76.2 mm (3.00 in) Additional non-standard belt widths are available in steps of 12.7 mm (0.50 in).

1982	78.0	29730	6683	12.5	8.39	14	14	7
------	------	-------	------	------	------	----	----	---

Additional standard belt widths are available in steps of 76.2 mm (3.00 in) Additional non-standard belt widths are available in steps of 12.7 mm (0.50 in).

2972	117.0	44580	10022	18.7	12.58	20	20	10
------	-------	-------	-------	------	-------	----	----	----

General belt tolerance is +0/-0.4% at 23°C/73°F and 50% RH. For exact belt width contact Customer Service. Non standard belt width on request.

*Max. Load per Drive Sprocket. Belt material: POM-D 1000 N (225 lbf)

**Max. Spacing between wear strips. Carry: 152 mm (6 in); Return: 304 mm (12 in)

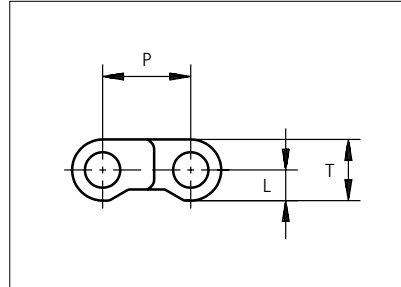
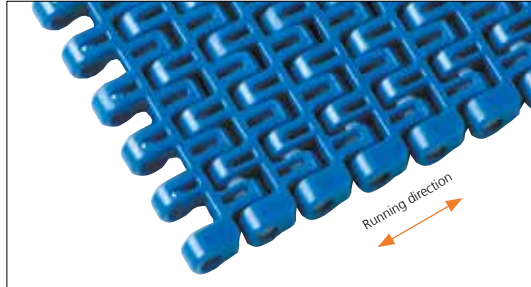
□ = Single Link



Plastic Modular Belt

Series **uni M-SNB** Type **M3 14%**

Distribué par Faber, service tapis
tapis@faber.fr tel. 03 24 27 86 38 fax 03 24 27 27 01



Straight running belt
Nominal pitch: 12.7 mm (0.50 in)
Surface type: Flat
Surface opening: 14%
Backflex radius: 20.0 mm (0.80 in)
Pin diameter: 5 mm (0.20 in)

Belt material & color	POM-D B	POM-LF BR	PP W						
					mm	in		mm	in
Pin material & color	PP B	PP W							
				P (Nominal)	12.7	0.50	T	8.8	0.35
				L	4.4	0.17	-	-	-

Non standard material and color: See uni Material and Color Overview.

Alternative pin and lock materials: Pin: PA6.6 **B** PE **W** PBT **LG** SS304 Endlock: PP **B** **W**
 Lockpin: PBT **LG** PA6.6 **D** PP **B** **W** PE **N**

Belt width		Permissible tensile force (Belt/pin material)				Belt weight (Belt/pin material)				*Min. No. drive sprocket per shaft	Number of wear strips (Min. No.)	
		POM/PP		PP/PP		POM/PP		PP/PP			**Carry (pcs)	**Return (pcs)
mm	in	N	lbf	N	lbf	kg/m	lb/ft	kg/m	lb/ft			
77	3.0	1155	260	578	130	0.5	0.33	0.3	0.21	2	2	2
153	6.0	2295	516	1148	258	1.0	0.65	0.6	0.42	2	2	2
229	9.0	3435	772	1718	386	1.4	0.97	0.9	0.63	2	2	2
305	12.0	4575	1028	2288	514	1.9	1.29	1.3	0.84	3	3	2
381	15.0	5715	1285	2858	642	2.4	1.61	1.6	1.05	3	3	2
458	18.0	6870	1544	3435	772	2.9	1.94	1.9	1.26	4	4	2
534	21.0	8010	1801	4005	900	3.4	2.26	2.2	1.47	4	4	2
610	24.0	9150	2057	4575	1028	3.8	2.58	2.5	1.68	5	5	3
686	27.0	10290	2313	5145	1157	4.3	2.90	2.8	1.89	5	5	3
762	30.0	11430	2569	5715	1285	4.8	3.23	3.1	2.10	6	6	3
839	33.0	12585	2829	6293	1415	5.3	3.55	3.4	2.31	6	6	3
915	36.0	13725	3085	6863	1543	5.8	3.87	3.8	2.52	7	7	4

Additional standard belt widths are available in steps of 76.2 mm (3.00 in). Additional non-standard belt widths are available in steps of 12.7 mm (0.50 in).

1982	78.0	29730	6683	14865	3342	12.5	8.39	8.1	5.46	14	14	7
------	------	-------	------	-------	------	------	------	-----	------	----	----	---

Additional standard belt widths are available in steps of 76.2 mm (3.00 in). Additional non-standard belt widths are available in steps of 12.7 mm (0.50 in).

2972	117.0	44580	10022	22290	5011	18.7	12.58	12.2	8.19	20	20	10
------	-------	-------	-------	-------	------	------	-------	------	------	----	----	----

General belt tolerance is +0/-0.4% at 23°C/73°F and 50% RH. For exact belt width contact Customer Service. Non standard belt width on request.

*Max. Load per Drive Sprocket. Belt material: POM-SLF 1000 N (225 lbf). PP 800 N (180 lbf), PE 800 N (180 lbf).

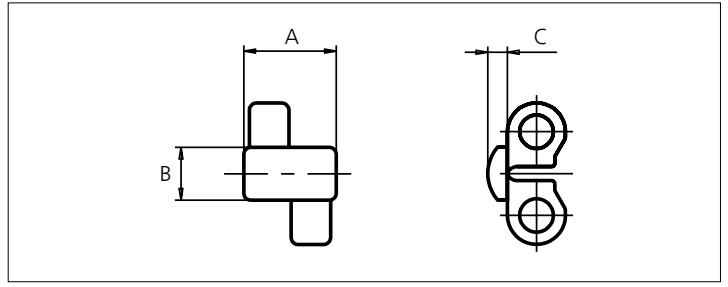
**Max. Spacing between wear strips. Carry: 152 mm (6 in); Return: 304 mm (12 in).

= Single Link



Accessories

Top/Bottom Insert



Type	Rubber material & color	A		B		C	
		mm	in	mm	in	mm	in
Rubber	01	14.0	0.55	8.0	0.31	3.0	0.12

Rubber inserts can be assembled in any belt surface upon customer request.
Non Standard material and color: See uni Material and Color Overview.

Sprocket

No. of teeth	Pilot bore	Bore size												Overall diameter	Pitch diameter	Hub diameter	A-dimension	B-dimension	Single row/Two way	Double row/Two way	Molded	Machined				
		in	0.75	0.78	0.98	1.00	1.18	1.25	1.50	1.57	2.36	2.5	3.54													
		mm	19.1	20.0	25.0	25.4	30.0	31.8	38.1	40.0	60.0	63.5	90.0													
Z10	x												41.5	1.63	41.6	1.64	28.0	1.10	16.1	0.63	25.0	0.98	x		x	
Z19	x				●	●	●	●	■				79.0	3.11	78.1	3.07	65.0	2.56	34.1	1.34	43.0	1.69	x		x	
Z28	x				●	●	●	■	●				116.2	4.57	115	4.53	65.0	2.56	52.2	2.06	61.1	2.41	x		x	
Z38	x					●	●	■	●	■			157.4	6.20	156	6.14	100.0	2.95	72.5	2.85	81.3	3.20	x		x	

Non standard material and color: See uni Material and Color Overview.

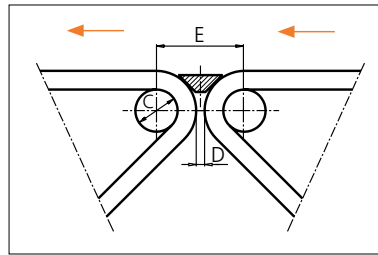
Molded sprocket



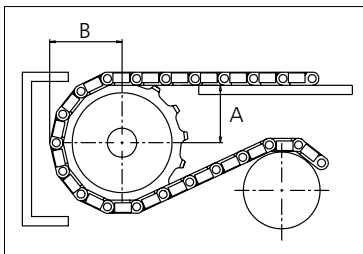
Molded sprocket



Nosebars Min. Dimensions



	mm	in
C	20.0	0.79
D	4.0	0.16
E	41.6	1.64



Other sprocket sizes are available upon request.
Two-part sprocket are available upon request.
Round bores are always delivered with keyway.
Other bore sizes are available upon request.
uni Retainer Rings: See uni Retainer Ring data sheet.
Width of tooth = 7.0 mm (0.28 in)
Width of sprocket = 20.0 mm (0.79 in)
Max load per sprocket shown does not take bore size into account.
Please also ensure that sufficient size shaft is chosen for corresponding load.

For correct sprocket position: See uni Assembly Instructions for uni M-SNB.
For more detailed sprocket information, contact Customer Service.